

Illustrasjoner til reguleringsplanen

Vassfjell pukkverk



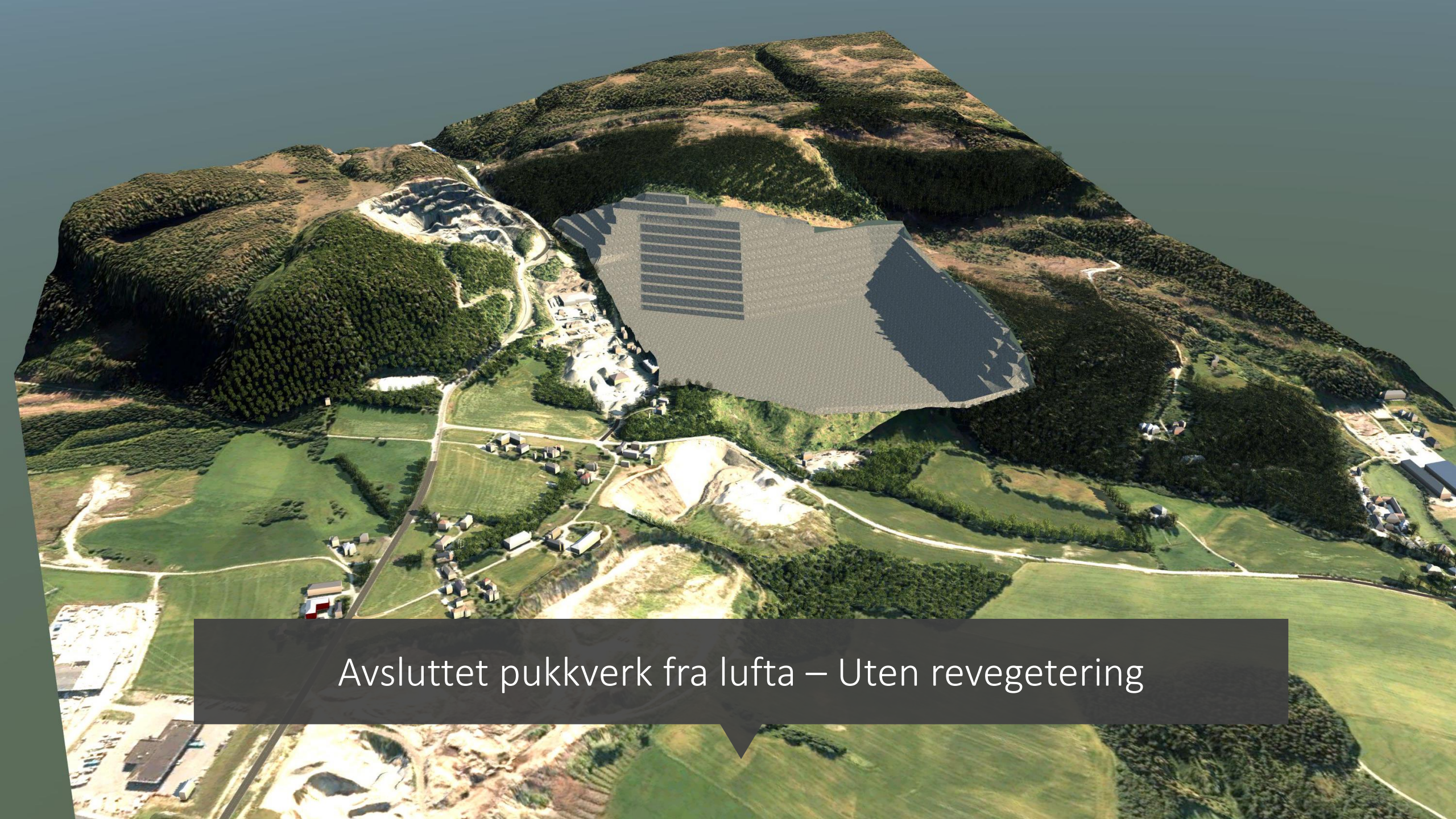
Dagens pukkverk fra lufta mot Vassfjellet



Avsluttet pukkverk fra lufta – Helt revegetert



Avsluttet pukkverk fra lufta – Noe revegetert



Avsluttet pukkverk fra lufta – Uten revegetering



Dagens pukkverk fra Torgårdsletta



Avsluttet pukkverk fra Torgårdsletta – Helt revegetert



Avsluttet pukkverk fra Torgårdsletta – Noe revegetert

A 3D architectural rendering of a landscape. A long, straight asphalt road with a dashed white center line and solid white edge lines runs from the foreground towards the middle ground. On either side of the road are green lawns and several modern, low-rise buildings with flat roofs. Some buildings have light-colored walls, while one has a prominent red section. In the background, there are rolling hills covered in dense green trees. A large, grey, textured wall or structure is visible on a hillside behind the buildings. The sky is a clear, bright blue with a few wispy white clouds. The overall scene is bright and clear, suggesting a sunny day.

Avsluttet pukkverk fra Torgårdsletta – Uten revegetering



Dagens pukkverk fra Røddevegen



Avsluttet pukkverk fra Røddevegen – Helt revegetert



Avsluttet pukkverk fra Røddevegen – Noe revegetert



Avsluttet pukkverk fra Røddevegen – Uten revegetering



Dagens pukkverk fra kryss Røddevegen-Åsvegen

A 3D architectural rendering of a residential development. The scene shows a road in the foreground leading into a cluster of modern, rectangular houses with grey roofs and light-colored walls. The houses are interspersed with numerous green trees of varying sizes. In the background, there are rolling hills covered in dense green vegetation under a clear blue sky. The overall aesthetic is clean and modern, emphasizing a green and integrated living environment.

Avsluttet pukkverk fra kryss Røddevegen-Åsvegen – Helt revegetert




Avsluttet pukkverk fra kryss Røddevegen-Åsvegen – Noe revegetert




Avsluttet pukkverk fra kryss Røddevegen-Åsvegen – Uten revegetering



Dagens pukkverk fra Fv 704 ved Skjøla



Avsluttet pukkverk fra Fv 704 ved Skjøla – Helt revegetert



Avsluttet pukkverk fra Fv 704 ved Skjøla – Noe revegetert



Avsluttet pukkverk fra Fv 704 ved Skjøla – Uten revegetering



Dagens pukkverk fra Vassfjellet-Svartåsen

An aerial photograph showing a quarry site in the middle ground. The quarry is a large, irregularly shaped area with exposed light-colored rock and some green vegetation. A small settlement of several small, simple buildings is situated on the edge of the quarry. The foreground is dominated by a dense forest of green trees. In the background, a large body of water stretches to the horizon under a clear blue sky.

Avsluttet pukkverk fra Vassfjellet-Svartåsen – Helt revegetert



Avsluttet pukkverk fra Vassfjellet-Svartåsen – Noe revegetert



Avsluttet pukkverk fra Vassfjellet-Svartåsen – Uten revegetering